

印刷制版

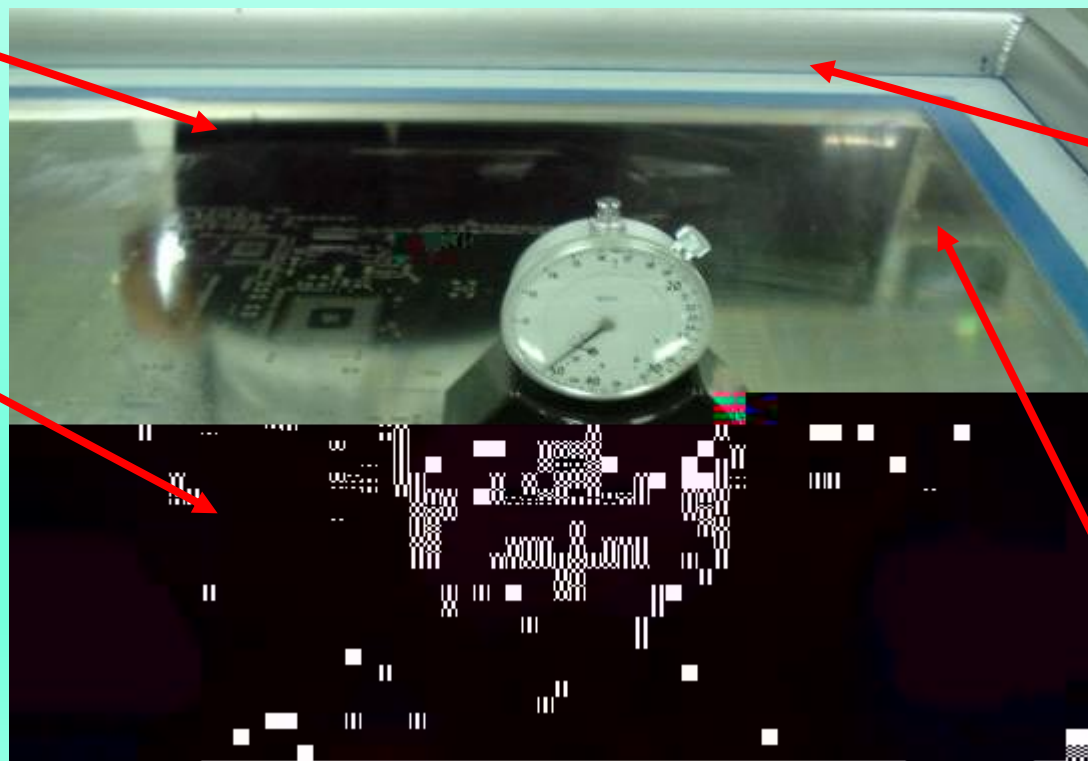


印刷钢网



钢网的基本组成部分

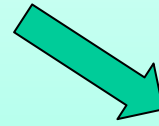
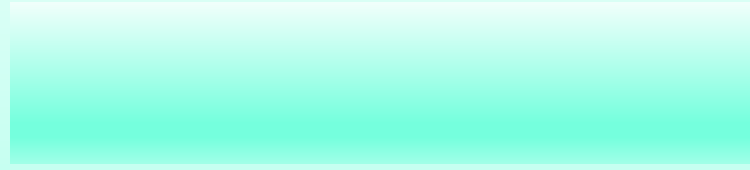
与



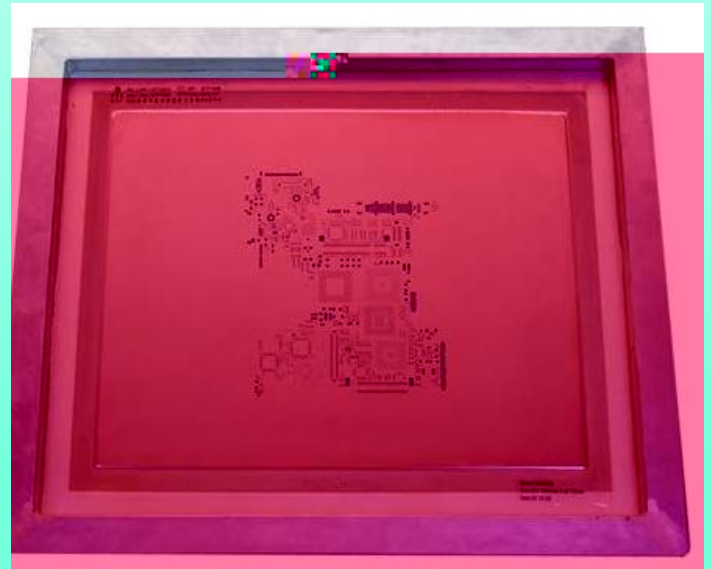
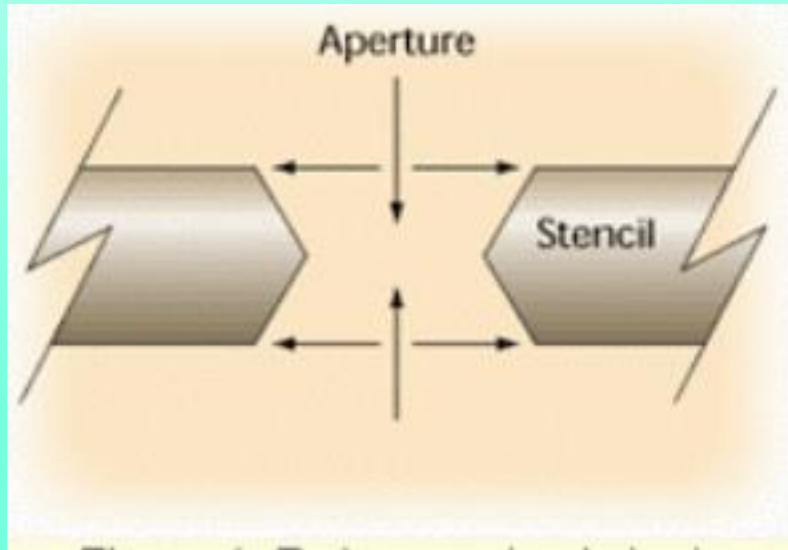
主
(deposition)

光 (bare
PCB)上 位
上
上



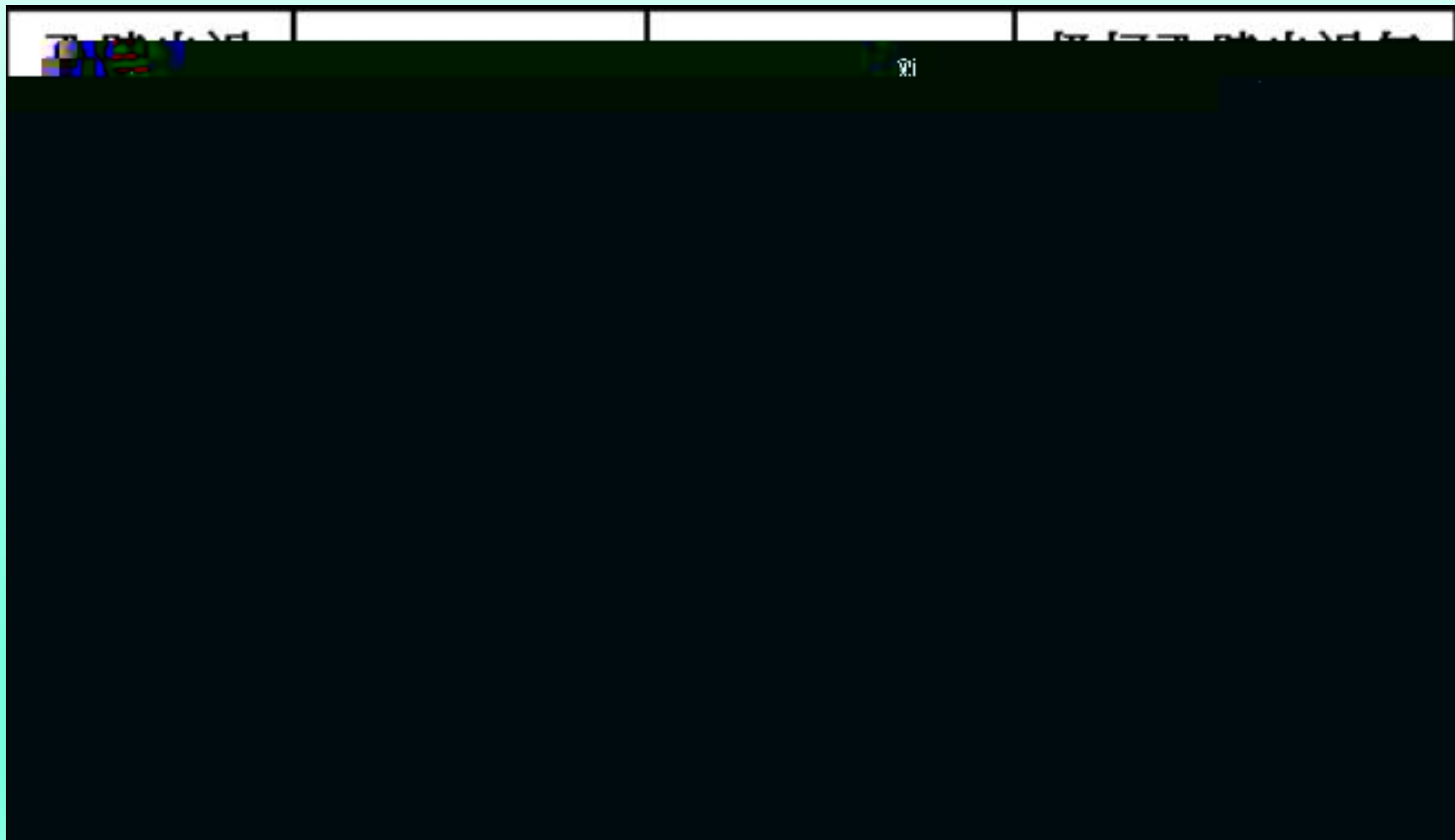


光



三

项 目	化学蚀刻	激光切割	电 铸
材 料	不锈钢/黄铜	不锈钢	镍或镍钴合金
硬 度	330-380/(很低)	370以上 (适中)	400-500(与溶液有关,可调,比不锈钢硬)
制作厚度	材料厚度	材料厚度	任意厚度
开口误差	$\pm 20\mu$	$\pm 5\mu$	$\pm 10\mu$
开口均匀性	较差(与设备有关)	很好	较好
位置精度	较好, 30μ	很好, 5μ	较好, 25μ
孔壁形状	哑铃行(有侧腐蚀)	梯形	梯形



光

表面打磨



与 光



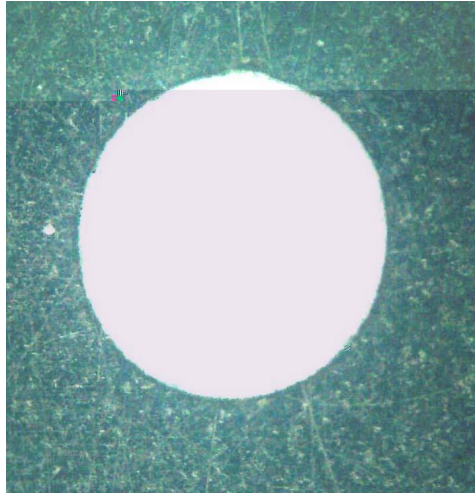



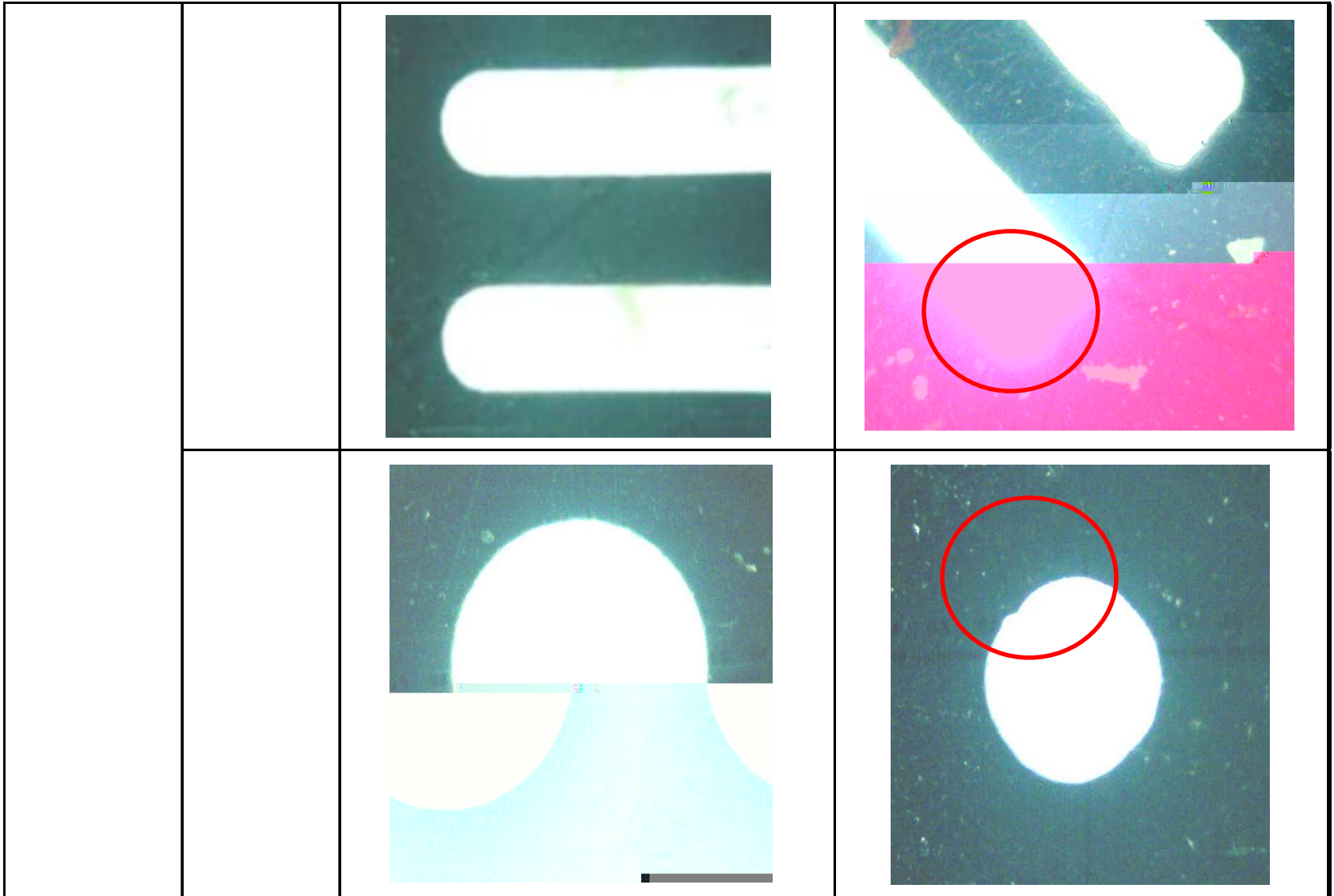



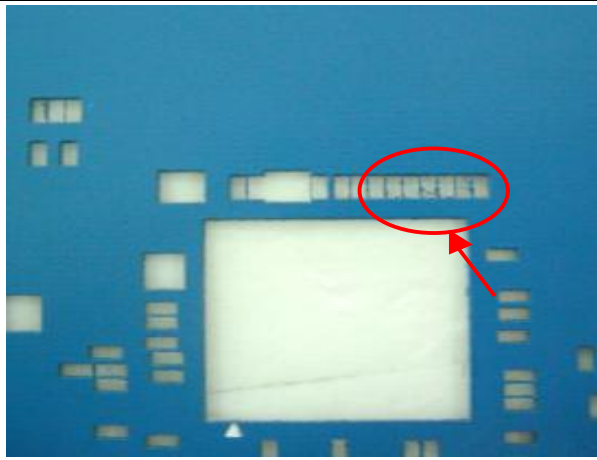

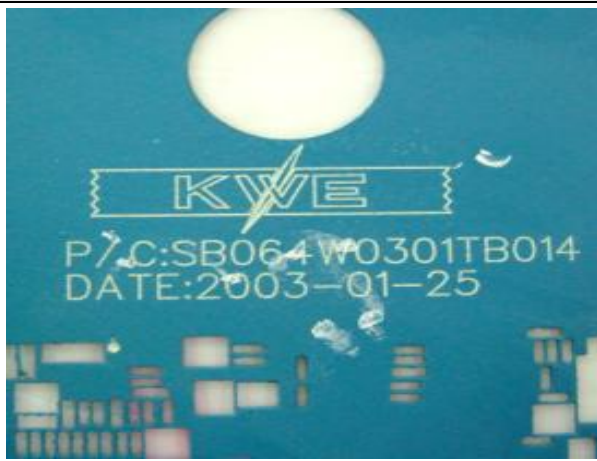


钢网冲孔抑尘





		
	 <p>KVE MODEL:RAINER CR PTH(TOP) PCB NO:2X378 P/C:SB05FW0304005 DATE:2003-04-12</p>	 <p>KVE P/C:SB064W0301TB014 DATE:2003-01-25</p>

